



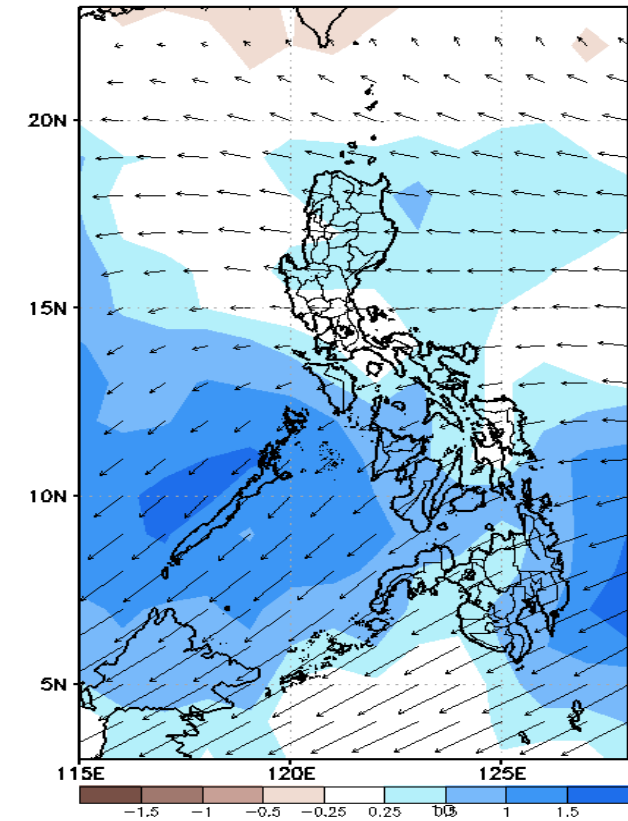
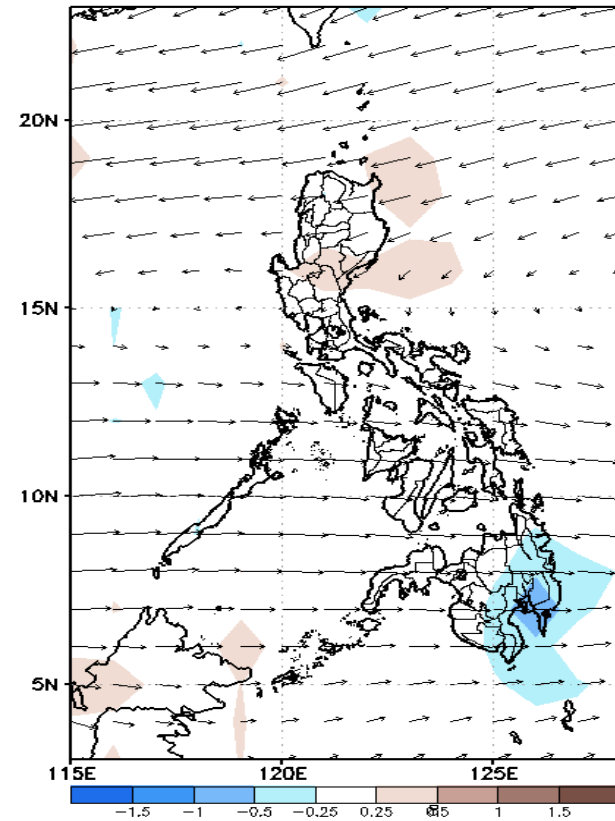
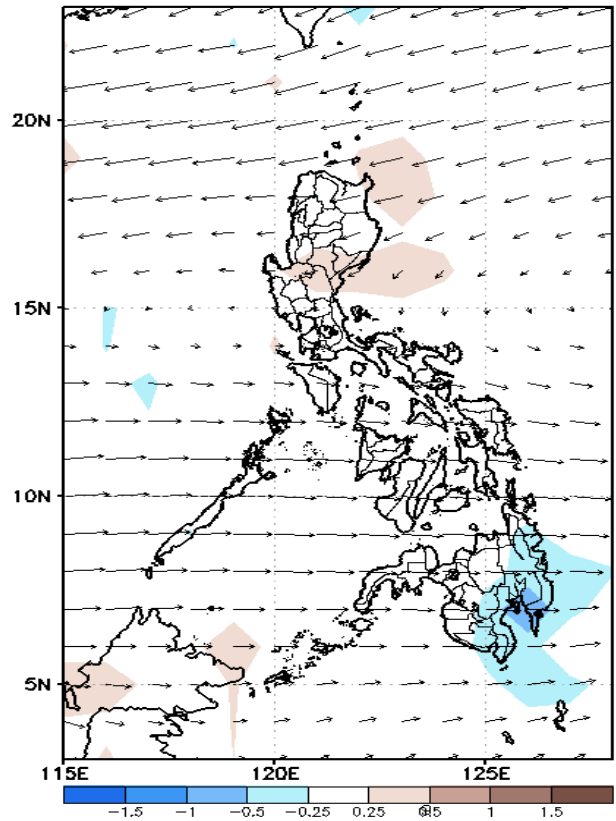
Week 1 & Week 2 Forecast for the Philippines using GEFS Model



GEFS Week-1 Forecasts: Wind Anomaly Forecast

Week 1: Sep 23-29, 2022

GEFS Week-1 850-hPa Divergence and Wind Anom Valid: 20220923 - 20220929 GEFS Week-1 700-hPa Divergence and Wind Anom Valid: 20220923 - 20220929 GEFS Week-1 200-hPa Divergence and Wind Anom Valid: 20220923 - 20220929

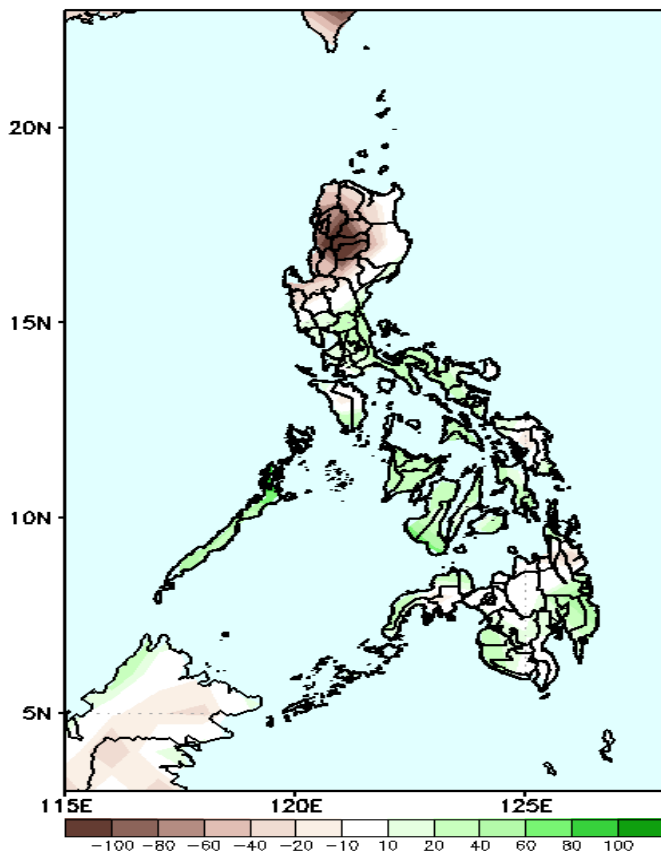


Northeasterly to easterly windflow affecting Northern and Central Luzon while Southwest Monsoon affecting the rest of the country during the forecast period.

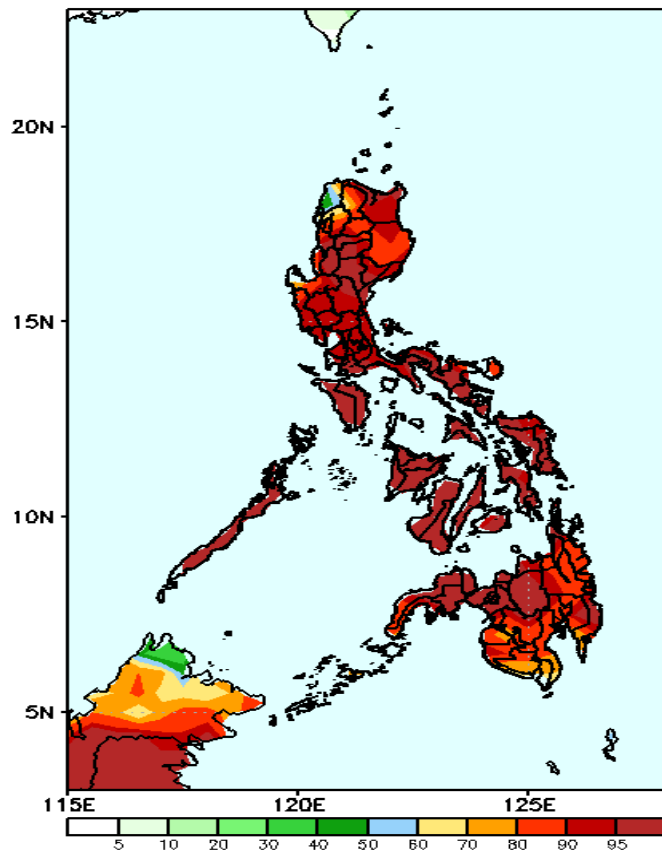
Precipitation Anomaly and Exceedance Probability > 25/50 mm

Week 1: Sep 23-29, 2022

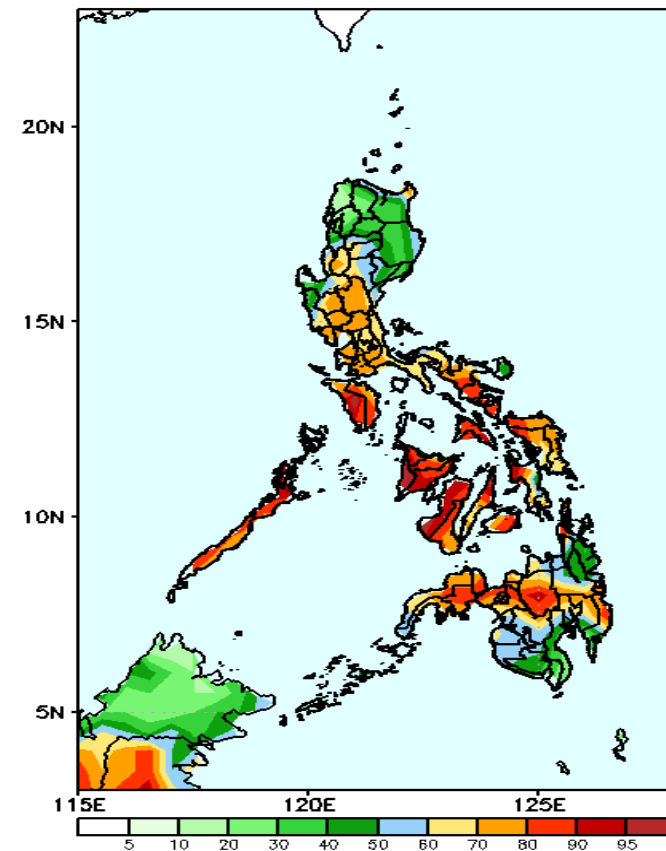
GEFS Week-1 Precip Anomaly
Valid: 20220923 - 20220929



GEFS Week-1 Exceedance Prob. > 25mm
Valid: 20220923 - 20220929



GEFS Week-1 Exceedance Prob. > 50mm
Valid: 20220923 - 20220929



Rainfall deficit of more than 100mm is expected in most parts of Ilocos & Cordillera Region and 40-80mm increase of rainfall in Visayas, western Mindanao and Davao Region during the forecast period.

High probability of rainfall to exceed 25mm in most parts of the country during the forecast period.

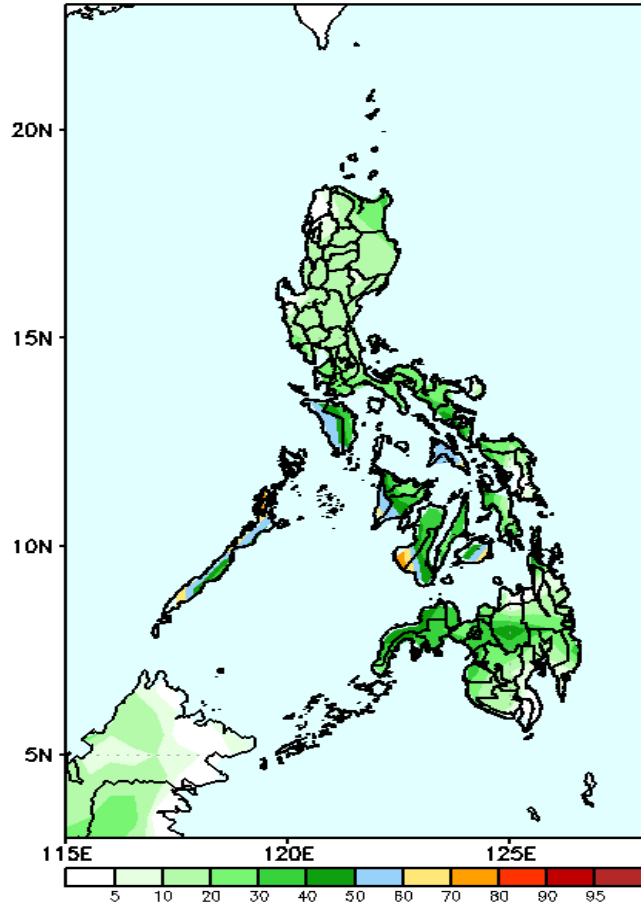
High probability of rainfall to exceed 50mm in most parts of the country except in some areas in Northern Luzon, CARAGA Region and southwestern Mindanao during the forecast period.



Exceedance Probability > 100/150/200 mm

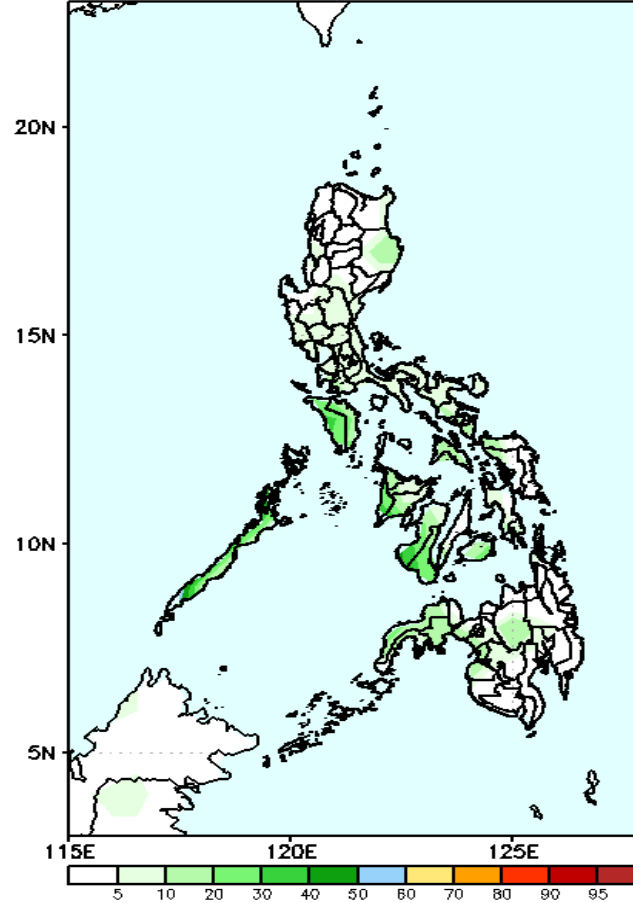
Week 1: Sep 23-29, 2022

GEFS Week-1 Exceedance Prob. > 100mm
Valid: 20220923 - 20220929



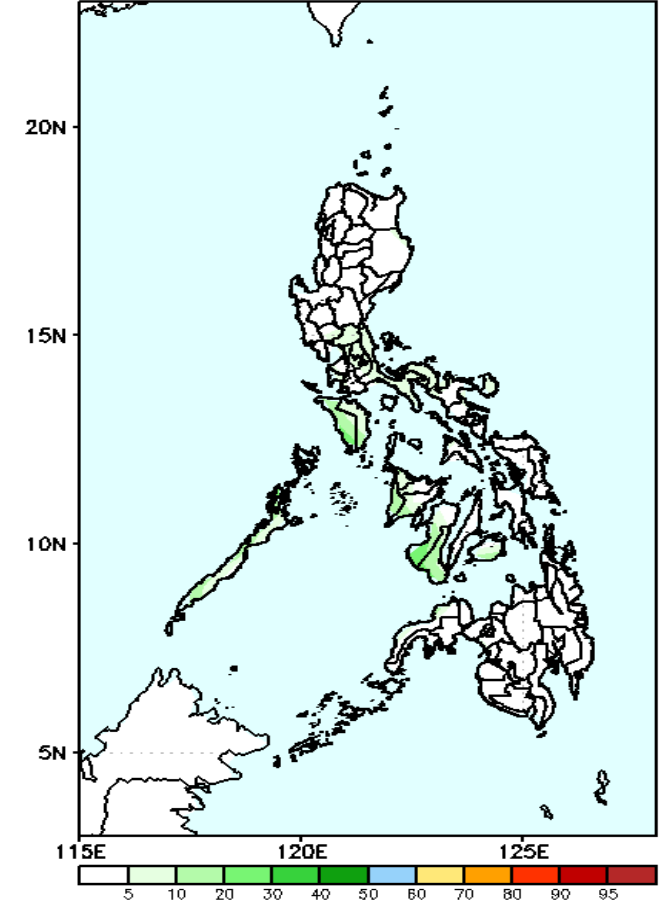
Low probability of rainfall to exceed 100mm in most parts of the country during the forecast period.

GEFS Week-1 Exceedance Prob. > 150mm
Valid: 20220923 - 20220929



Low probability of rainfall to exceed 150mm in most parts of the country during the forecast period.

GEFS Week-1 Exceedance Prob. > 200mm
Valid: 20220923 - 20220929

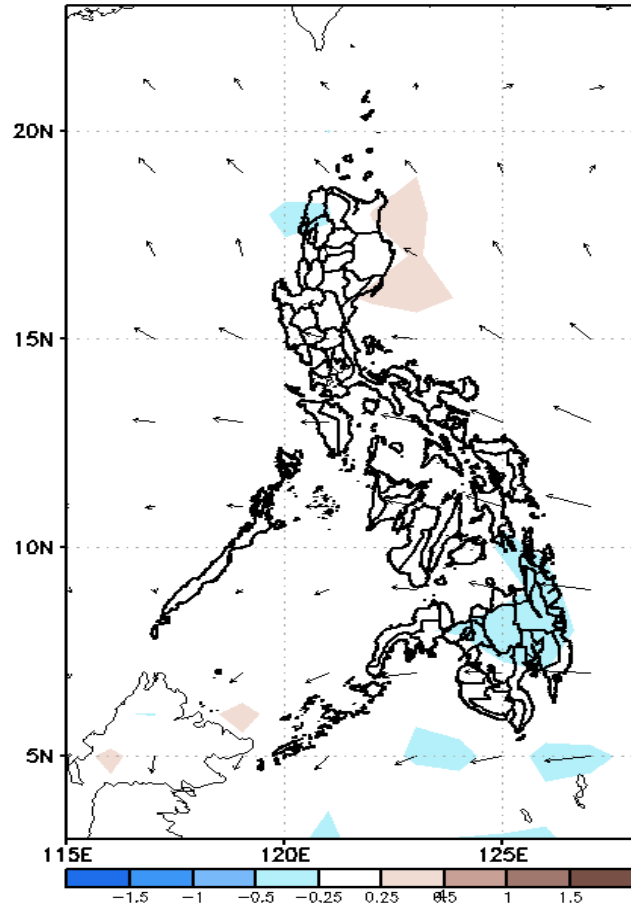


Low probability of rainfall to exceed 200mm in most parts of the country during the forecast period.

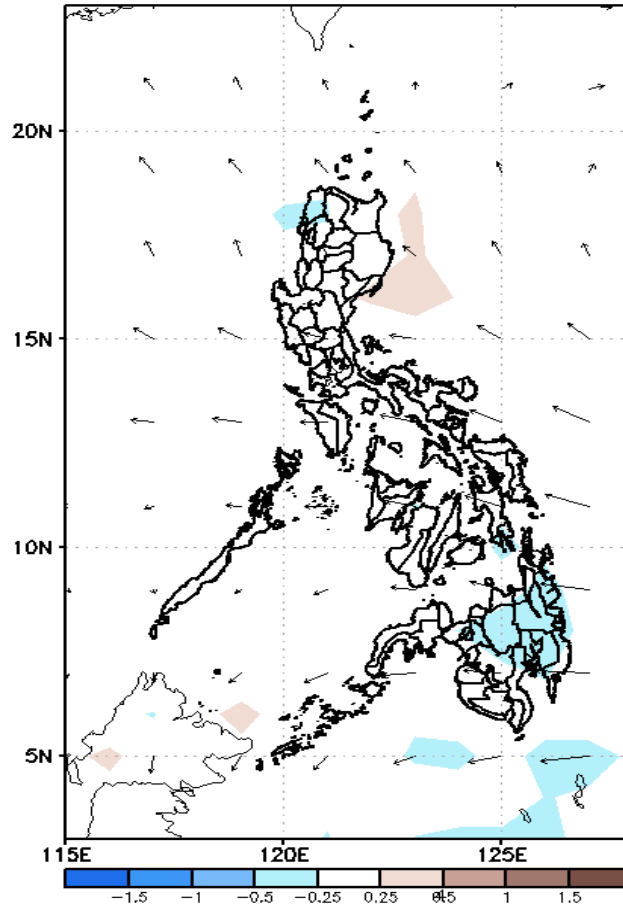
GEFS Week-2 Forecasts: Wind Anomaly Forecast

Week 2: Sep 30- Oct 06, 2022

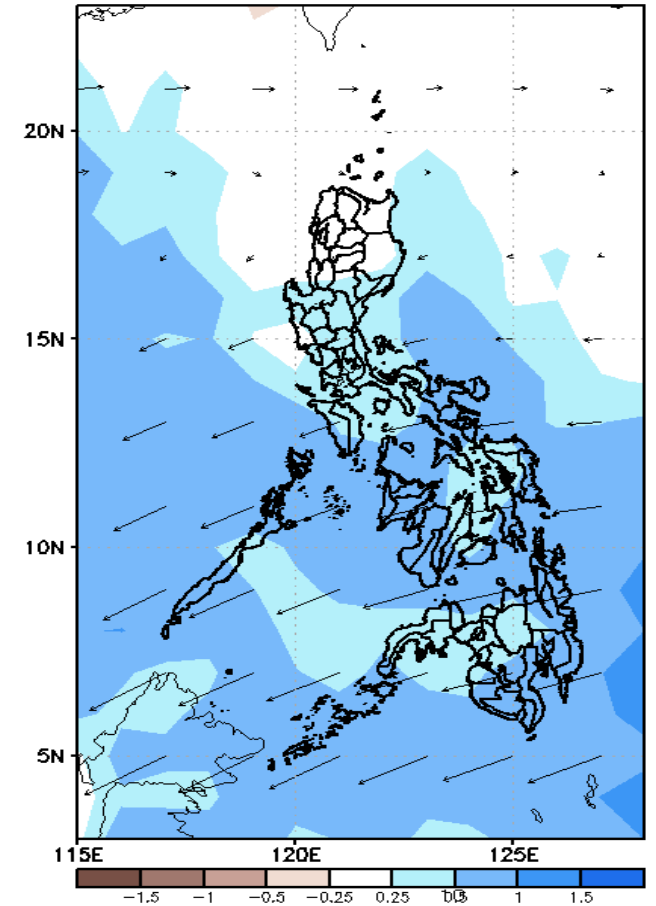
GEFS Week-2 850-hPa Divergence and Wind Anom
Valid: 20220930 - 20221006



GEFS Week-2 700-hPa Divergence and Wind Anom
Valid: 20220930 - 20221006



GEFS week-2 200-hPa Divergence and Wind Anom
Valid: 20220930 - 20221006

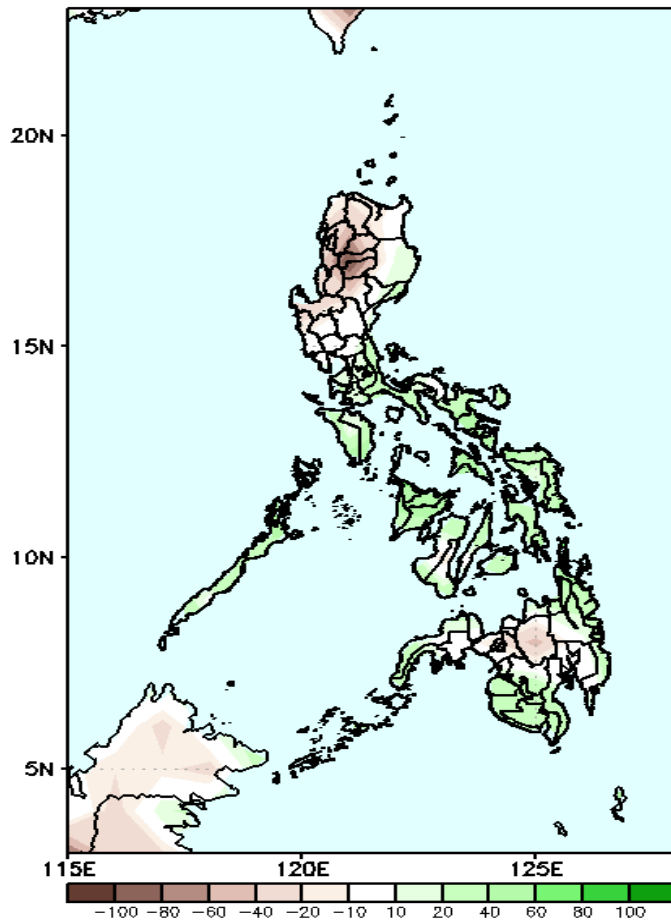


Easterlies affecting most parts of the country during the forecast period.

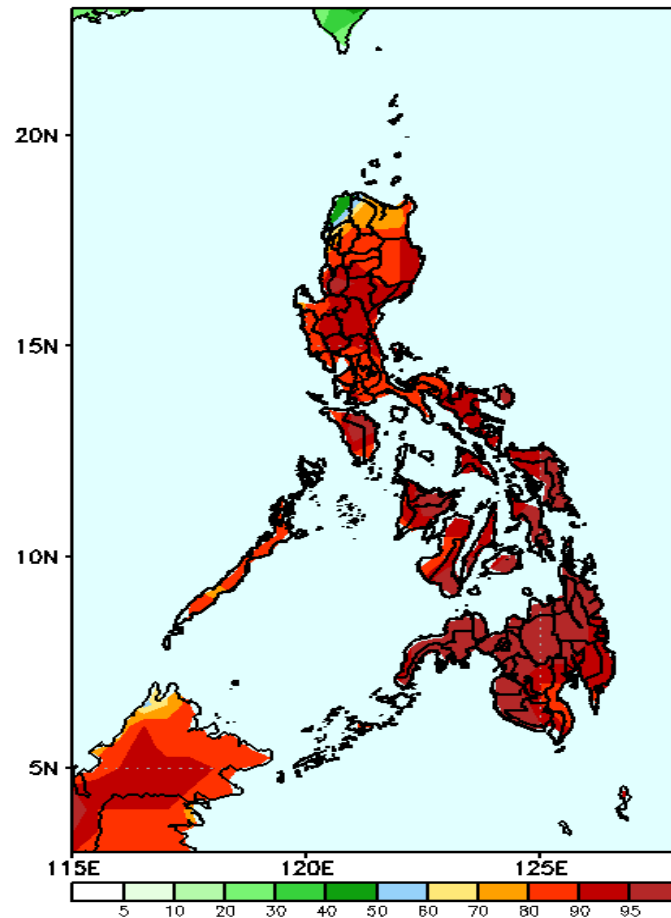
Precipitation Anomaly and Exceedance Probability > 25/50 mm

Week 2: Sep 30- Oct 06, 2022

GEFS Week-2 Precip Anomaly
Valid: 20220930 - 20221006

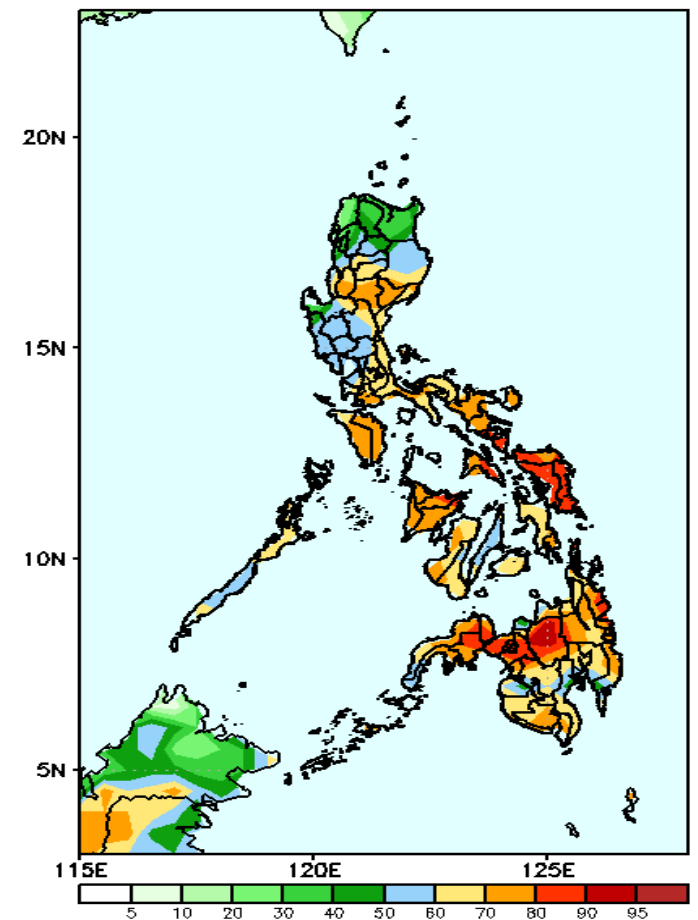


GEFS Week-2 Exceedance Prob. > 25mm
Valid: 20220930 - 20221006



High probability of rainfall to exceed 25mm in most parts of the country during the forecast period.

GEFS Week-2 Exceedance Prob. > 50mm
Valid: 20220930 - 20221006



High probability of rainfall to exceed 50mm in most parts of the country except in some parts of Northern Luzon during the forecast period.

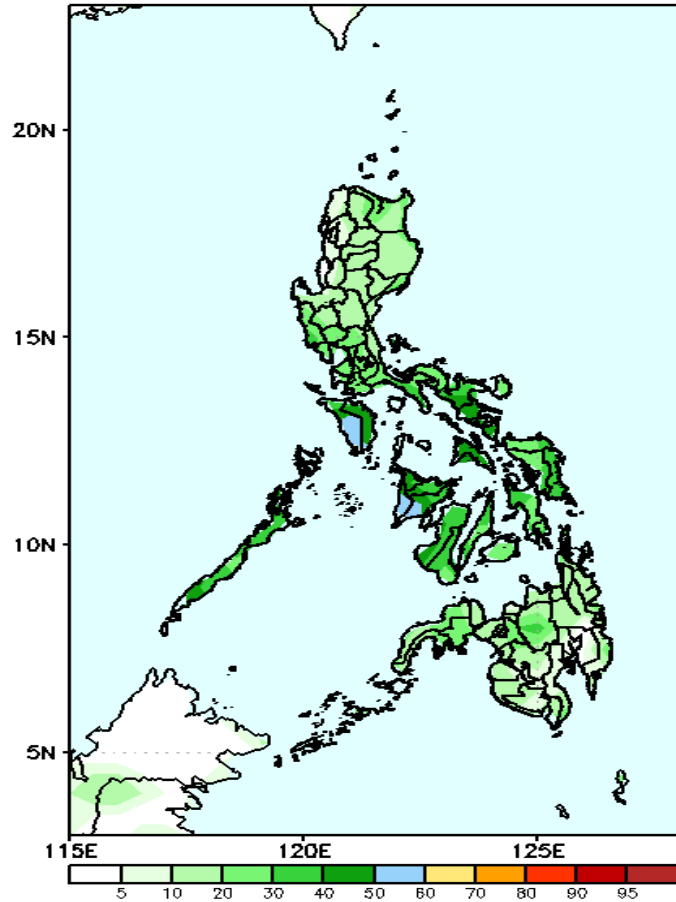
Rainfall deficit of 40-100mm is expected in Ilocos and Cordillera Region while 40-80mm increase of rainfall is more likely in Southern Luzon, Bicol Region, most of Visayas and Mindanao(except Bukidnon) during he forecast period.



Exceedance Probability > 100/150/200 mm

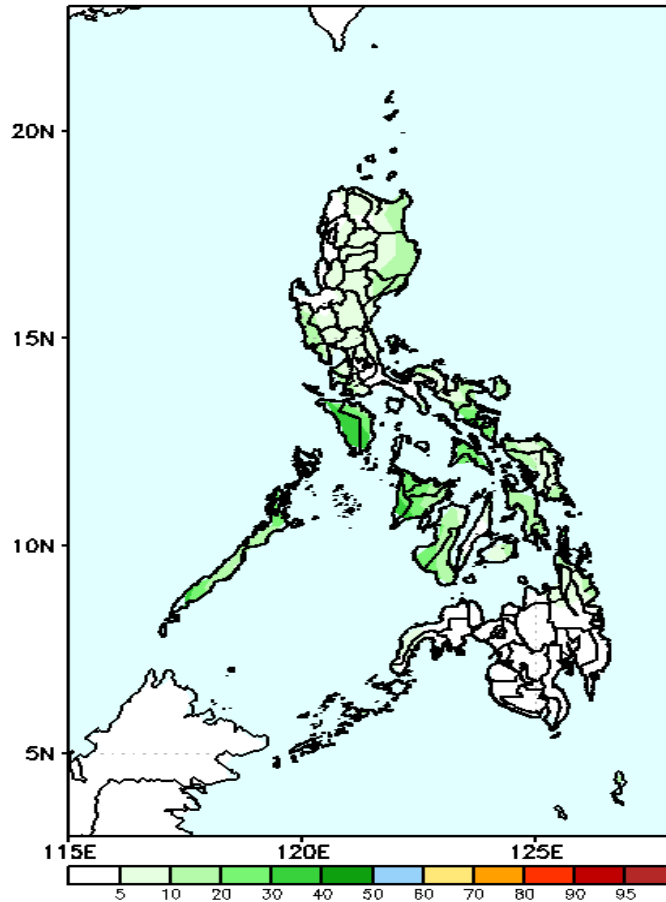
Week 2: Sep 30- Oct 06, 2022

GEFS Week-2 Exceedance Prob. > 100mm
Valid: 20220930 - 20221006



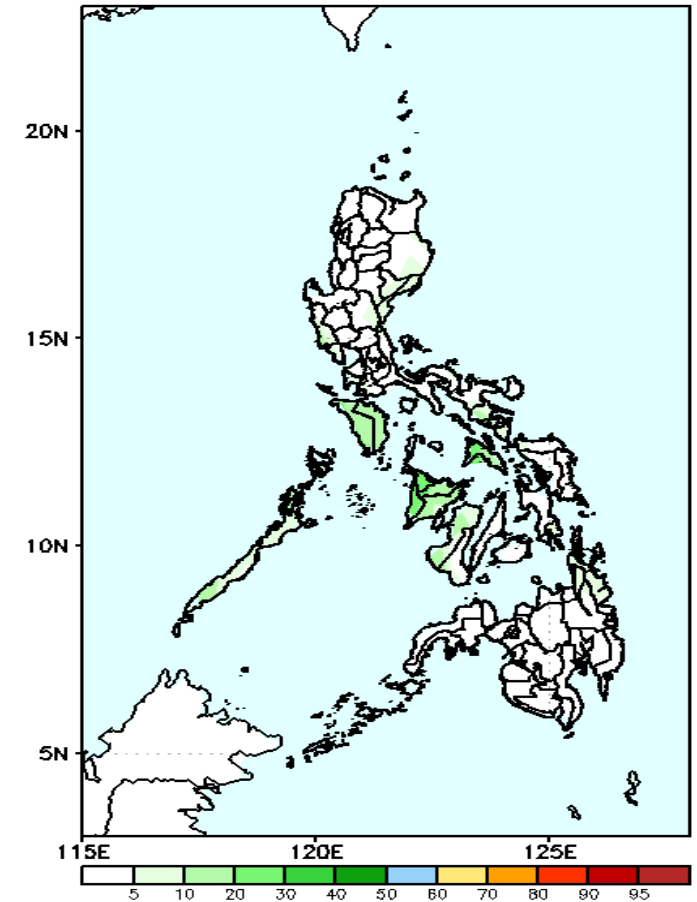
Low probability of rainfall to exceed 100mm in most parts of the country during the forecast period.

GEFS Week-2 Exceedance Prob. > 150mm
Valid: 20220930 - 20221006



Low probability of rainfall to exceed 150mm in most parts of the country during the forecast period.

GEFS Week-2 Exceedance Prob. > 200mm
Valid: 20220930 - 20221006

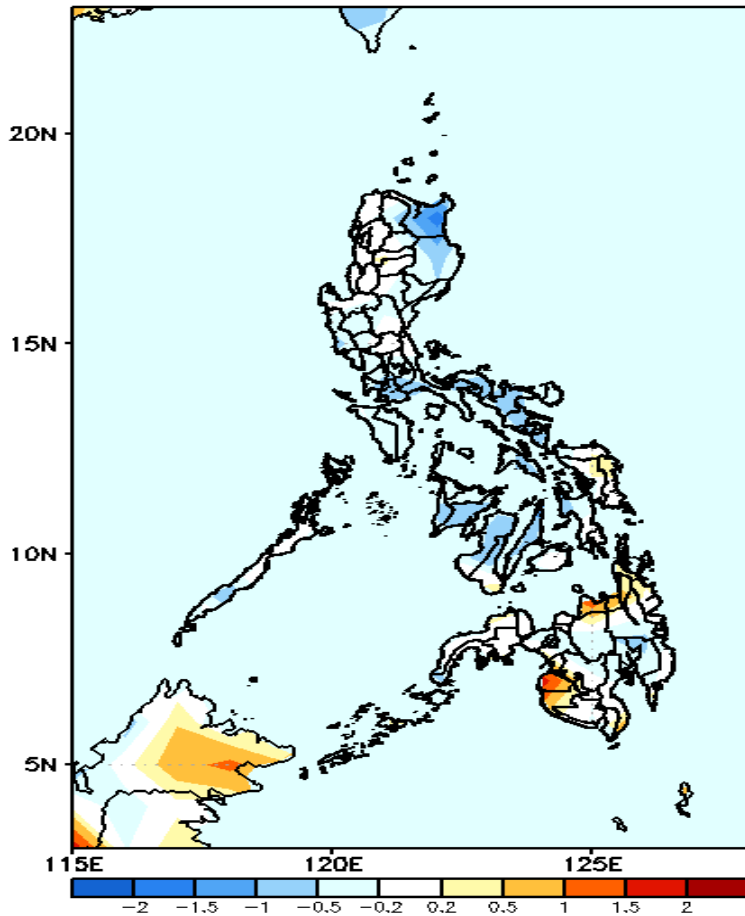


Low probability of rainfall to exceed 200mm in most parts of the country during the forecast period.



GEFS Week-1 & 2 Forecasts: T2m Anomaly

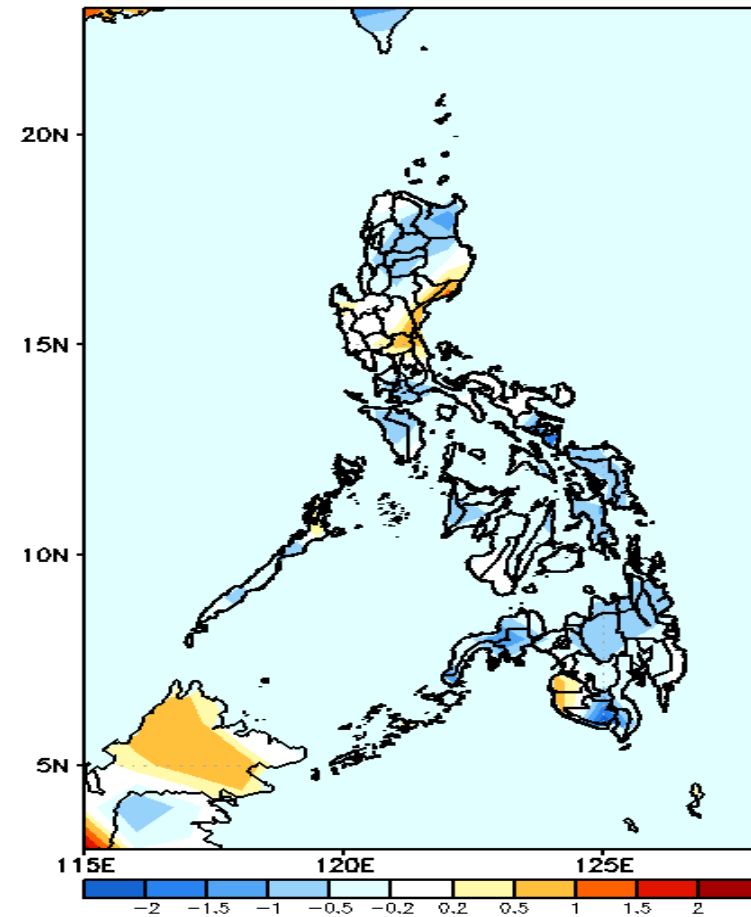
GEFS Week-1 T2m Anomaly
Valid: 20220923 - 20220929



2m Temperature Week 1: Sep 23-29, 2022

Near to slightly cooler than average surface air temperature will likely experience in most parts of the country except in Cagayan, cooler than average and Misamis Oriental & Maguindanao, warmer than average during the forecast period.

GEFS Week-2 T2m Anomaly
Valid: 20220930 - 20221006



2m Temperature Week 2: Sep 30- Oct 06, 2022

Slightly cooler to cooler than average surface air temperature will likely experience in most parts of the country except in Aurora, Bulacan, Antipolo, Maguindanao and Sultan Kudarat where slightly warmer to warmer than average temperature is expected during the forecast period.